



Ōmārama Gazette

May 2026

Editorial - Rates and related issues

Apologies in advance, dear readers, for two things.

1. This will be a deadly dull read - there's not much to laugh about
2. While I have done as much homework as I can, there's bound to be something I've missed.

I'm writing this, hopefully from the perspective of the average Omarama resident who with considerable alarm faced the news the council is considering a 19% rates hike, perhaps more, despite its long-term plan forecasting a 7% rise to ensure its financial sustainability.

But, having reported on Waitaki District Council matters for the past 20 years, there were some warning signs, not many but some. I'll get to that.

So, why are we here?

The council paperwork and the presentation by Waitaki mayor Mel Tavendale in Otematata on Sunday lists these main factors.

- The council has run at a deficit – did not collect enough money to pay the bills - for nine of the past 10 years, Mrs Tavendale said.
- And there is a \$14m projected deficit for this next financial year, 2026/27.
- There is that wiley 'ol devil inflation fueled in the past few months by, you guessed it, rising fuel costs.
- Last year, the council at the time, to keep rates down decided to 'unfund' \$9m of water depreciation because it was thought that could wait until decisions about the new water entity were sorted. Turns out that was an own goal because that now has to be paid before the transfer of assets is made to Southern Waters.
- Depreciation – It might have appeared on the books, but money was not put aside to replace old assets like the Aquatic Centre and the chooks (or maybe that should be ducks?) are coming home to roost.
- And a somewhat worrying concern given the frequency of adverse events the debt cap

-continued over

Rates and related issues - continued

– the amount that can be borrowed from Local Government New Zealand is set at 175% of revenue (the money coming in) and the council has already borrowed 166%.

All agree something must be done.

This is what the council has put in front of us.

A 19% rise (\$13.15 per week for the average ratepayer) which puts off somethings until later, reduces the deficit but doesn't remove it.

A 27% rise (\$18.69 a week) allows for rising costs but doesn't remove the deficit.

It would take a 45% rates rise(\$31.15 a week) to break even.

This does not reduce the debt.

The Government will impose a rates cap to limit annual increases to a range of 2–4% from January 2027. Which puts a deadline on the council playing catchup by increasing rates.

And this excludes – the fine print - fees and charges.

In addition to other cost saving measures [fees and charges will be reviewed](#) for the 2026/27 financial year.

For example: an increase of 50% has been proposed for new applications for food services, there will be increases in building and roading charges, amounts to be advised.

Once Southern Waters takes up its responsibilities in July next year council rates will drop but we will get a water rate.

So, we will be paying rates plus water charges, plus fees and charges for services.

How could council cost saving and debt reduction measures affect Omarama?

Ways to reduce costs are to reduce services – libraries, art galleries and the swimming pool as examples.

The fastest way to reduce debt is to sell assets – Omarama has the airfield, the community hall and land.

The Omarama Airfield Company is due to repay the loan of \$415,000 plus interest which it received to complete the development of the Nimbus Rd subdivision by May 27. It was intended that this be paid off as the sections sold. However, in its December half-yearly report to shareholders the airfield company reported that during the period one property sale was settled and a second went unconditional for settlement in 2026, and enquiries for the period were slow.

As said, water assets will transfer to Southern Waters which will reduce council rates but a separate water rate will be levied. How this will affect Omarama is unknown. In late 2023, the council built a new Omarama Water Treatment Plant as part of its compliance with the directions of Taumata Arowai - the national water services authority. Water main renewals were carried out in the town last year and in 2020 under the previous Government's Three Waters programme the council approved a \$1.4 million for wastewater treatment upgrade in Omarama. Omarama should not need to pay for upgrades.

The Oamaru Stadium – There were some parcels of money given to this project by the council but it has been paid for mostly by outside funding and grants.

Which option do you support for Waitaki's financial sustainability?

Option 1: 19% increase (minimum recovery)

What it does:

Covers basic cost increases and part of the deficit (\$5 million operating costs but not the \$9 million of unfunded depreciation)

What it means:

Reduces the deficit, but doesn't remove it completely

Some costs are still being pushed into the future (\$9 million of depreciation)

This is a balanced option – sharing the cost now but not fully closing the gap.

For the average ratepayer, this would mean an increase of around \$13.15 per week.

Option 2: 27% increase (median option)

What it does:

Covers everything in Option 1 plus allowing for extra cost pressures (like fuel, materials, etc.)

What it means:

Better prepares Council for rising costs

Still doesn't fully eliminate the deficit (\$9 million of depreciation)

This option builds in a buffer so Council is less exposed to unexpected cost increases.

For the average ratepayer, this would mean an increase of around \$18.69 per week.

Option 3: 45% increase (full cost recovery)

What it does:

Covers all cost increases and fully funds the entire \$14 million shortfall

What it means:

No deficit – books are balanced

Council is fully funding the true cost of services

This is the most expensive option now, but it gets rid of the deficit and avoids pushing costs into the future.

For the average ratepayer, this would mean an increase of around \$31.15 per week.

We want to hear from you...

Community Meetings

AHURIRI: Otematata Community Hall
Sunday 3rd May, 1pm

WAIHEMO: Palmerston Sports Hall
Monday 4 May, 6pm

ŌAMARU – Ōamaru Opera House
Wednesday 6 May, 5.30pm

Make your submission

Online: <https://www.letstalk.waitaki.govt.nz/annual-plan-2026-27>

By Email: consult@waitaki.govt.nz

Paper copies can be found at the Ōamaru Library and Service Centre and Waihemo Service Centre. Drop it off at Council HQ (20 Thames Street, Ōamaru), the Ōamaru Library and Service Centre, or the Waihemo Service Centre.

Got a Question?

Email letstalk@waitaki.govt.nz with your questions, and we'll answer them by email or video during the consultation.

The consultation opened on Wednesday 29 April 2026 and closes at 5pm on Wednesday 13 May 2026.

For more information, see Page 2.

Consultation closes 5pm, Wednesday 13 May



Waitaki
District Council
TE KAUHĪHERA Ā ROHE O WAITAKI

Rates and related issues - continued

But Mrs Tavendale, in an interview with [Michael Laws of The Platform](#) said the ongoing operational costs could be an issue.

“Yeah um, that’s absolutely another thing in front of us and I guess that’s got to be part of the mix.

“In any community that kind of facility does split people because there will be those who actively use it and those who pay for it and who will not use it

“...User pays for something like that has the potential to make it unaffordable for the people that want to use it,” she said.

So, who is responsible for where we find ourselves?

Was this the ratepayers’ fault as thinly veiled statements coming out of the council have suggested? We wanted too much and weren’t prepared to wear the increases needed to pay for it, so councillors with all the best intentions acquiesced to our wishes.

A certain [Omarama adventure park](#) project springs to mind. You might recall this loan-funded council proposal made a surprise entrance into the budgets after the 2020 Masterplan was approved and was not removed until 2024 after the council received a record number of submissions opposing it. There had been publicly-voiced opposition to the project at each of the long-term plan hearings between 2020 and 2024. It was a project scheduled to begin in the 2024/25 year.

Were the warning signs there?

In [June 2024 the Omarama Gazette](#) reported that during the May 2024 LTP deliberations the council’s chief financial officer Amanda Nicholls gave councillors a reasonably grim forecast and warned them about impacts of borrowing to fund new projects.

She delivered a stern warning to councillors about the council’s “debt situation”. This year’s proposed rates increase should not be considered in isolation, she said. Councillors needed to be mindful of the indirect impact on rates of interest rates on loans and, in particular, how this might impact smaller communities.

Ms Nicholls went on to discuss the “carry forwards”, reminding councillors the council was about \$30 million behind in its 2024 capital expenditure programme.

“That \$30m of capex that is in the 2024 budget will need to be brought into the 2025 budget so bear in mind that’s debt-funded, and that interest will be added to the 2025 budget as well. Sorry to be so negative but that is the facts.”

Ms Nicholls said it was a given that some projects spanned multiple years but there was simply not the capacity to “do it all”.

“When we get into the Long Term Plan [2025] the auditors are going to really scrutinise how much we can actually achieve.

“We want our Long Term Plan to be zero-ed out and we may even come back to you [councillors] and say, forget everything you’ve approved in the past, any that are spanning into this financial year, and go back to zero, and work out exactly what we can achieve. “Because obviously last year our \$60M capex budget [was] not achievable - we can’t just keep adding to it.”

Council chief executive officer Alex Parmley said it was not a new issue. “Since before I came here we serially under delivered on the capital programme because we had a capital programme that was beyond our resources to actually deliver.

Do we need more accountability in the system?

You can read, hear, see and understand all the reasons given, but they can't help but sound like excuses.

Especially when you learn there has been a deficit in all but one of the past 10 years. And that the debt cap of 175% is within spitting distance.

Why was this not made clear to ratepayers at each review?

Most of us are not financial gurus, most of us have to be able to trust what is set out in front of us. Most of us do not have access to specialist analysts or consultants to explain what might be the outcome of certain decisions made at those levels, some behind closed doors.

We have to trust.

This has been described as a perfect storm but it is clear that aside from rising fuel costs - and this only in the past few months - this did not come about overnight or by chance.

In my humble opinion, and yes this is opinion, absolutely, an audit does need to take place, not as a witch-hunt but to learn and change so the cycle doesn't continue. This is our money that has been entrusted and this feels like a breach of trust.

Unsurprisingly, there are many who have an opinion. probably as many opinions as there are ratepayers.

Read the material the council has made available, read what accredited authors have to say and then have your say. Yes, I hear you, what does it matter, the councillors will make the decision anyway.

So after you have done your bit and had your say, consider this.

Because this much is our responsibility.

Who have we put in the position to make these decisions for us? Did we actually think that through at election time? What are their skills? What is their true intent? Is allowing someone to be elected unopposed actually an informed decision made with confidence or is it a sign of apathy?

We, the voters, have also contributed to this.

Before the next election look carefully at the credentials of those you are allowing to have a seat at that particular table. Let's do our research, let's study the form. Let's not chose those who speak at their communities rather than for their communities. Let's not let apathy dictate our future. Let's be motivated and not manipulated. Let's do things differently.

So, right now – there is a human cost to all of this. We will need to look out for each other as we band together and haul ourselves out of this mess.

And, as wise old heads say; there's no use in wallowing. It's head down bum up, there's work to be done. We can do that.

Omarama has always 'done it for ourselves'.

Look through these pages.

We are still daring to dream without going cap-in-hand to the council, but instead using all our volunteer resources to power into our future.

It was Ernest Shackleton that said; "Optimism is true moral courage."

We have that and more.

Check your eligibility for a rates rebate here:

<https://www.govt.nz/browse/housing-and-property/getting-help-with-housing/getting-a-rates-rebate/rates-rebate-calculator/>

Giving us a clear picture in Otematata

The first step in a short two-week consultation period on a proposed 19% rates increase — and two further options of 27% and 45% - began in Otematata on Sunday.

Between 55 and 60 people attended the Waitaki District Council's first in the round of public meetings and other community engagement at the Lakes centre.

Those gathered included Waitaki District mayor Mel Tavendale and eight councillors, four Ahuriri Community Board members, council chief executive Alex Parmley and various council staff.

The remainder was largely made-up residents from Otematata and surrounds, with a few from Omarama and at least one from Oamaru.

Oamaru Today Facebook page editor Allan Dick travelled up to Otematata to attend the meeting.

Mrs Tavendale led the meeting with a presentation which was followed by questions. Crs Frans Schlack and Brent Cowles also spoke.

Following financial briefings and as councillors had worked through the annual plan process it had become clear that the council's present financial situation was "not one that anyone wanted to be in" and one that required a decisive response, Mrs Tavendale said.

"We are here to listen and here to tell you where we are at."

The council had hoped it could "ride this out" but it became obvious it needed to "do something different".

Mrs Tavendale ran through the various financial pressures at play and then each of the proposed scenarios to remedy the situation - a 19%, 27% and 45% rates rise, and the outcomes each would produce.

For the average ratepayer a 19% rise would mean an extra \$13.15 per week, a 27% rise would mean an extra \$18.69 per week and a 45% increase would mean the average ratepayer would pay \$31.15 more per week.

In addition to this Southern Waters – the newly-established joint council water services entity would also levy rates for the water, wastewater, and stormwater services it would now be providing.

Handing the assets to the new entity created an additional problem for the council because the overheads which were covered by ownership of the water assets "now have to be covered differently".

All in all, "things aren't working" and it was not possible to continue following the same path.

Ultimately, the proposals put forward were about "how to get to where we can afford what it is we want," Mrs Tavendale said.

In answer to a question, Mrs Tavendale said the consultation process was "authentic".

Although still difficult there were some cost-cutting decisions which were easier to make than others.

Where matters got "thorny" was when it was clear the budget item was important but it would probably need to be cut regardless.

"It is hard... we are listening... is it genuine consultation? We're here to listen."

"A zero% rise and we'll have commissioners walk in the door," Mrs Tavendale said.

Cr Schlack said in past years rates increases had been kept low and not covered costs.

More money could be borrowed but the council had almost reached the maximum amount it was allowed to borrow – the debt cap – and he would like to see what was left kept aside in case of an adverse event.

It was only two years until the Government's rates cap legislation came into play and once that happened the amount rates could go up would be limited, "So, there's only two years to get to that."

"For me a loss of service is not an option [to keep costs down and] assets have to be maintained."

"We're in between a rock and a bloody hard place."

"Do we make the tough decision now or put it off?" Cr Schlack said.

Otematata resident Eleanor Cunningham said it seemed the town received few council services, naming rubbish, recycling and footpaths.

"What will the council be doing for Otematata?"

The town already functioned through the work of a "huge team of volunteers", she said.

Mrs Tavendale acknowledged residents were proactive.

The council did have plans for footpath renewals in 2027 and while there had been Government-led initiatives for waste management this had paused after the elections.

There was "ongoing discussion" but "I can't promise you that in the budget".

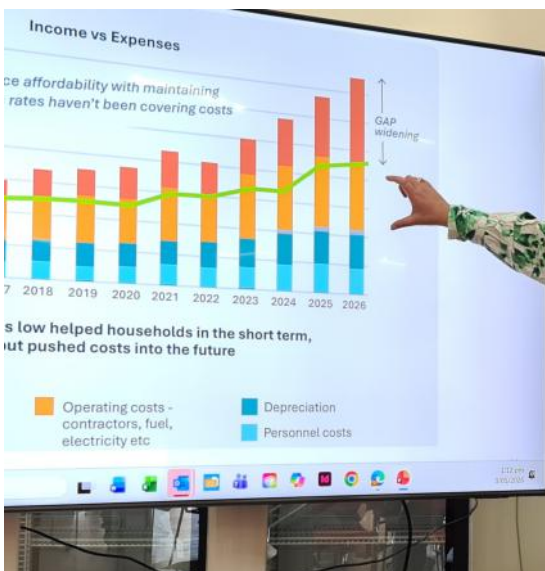
"We're looking at a sustained level of service but not a whole lot more," she said.

Cr Cowles said there had been "many, many, many, many years" of shortfalls in previous council's budgets.

"We haven't caught up on Covid costs – that was a zero rates [increase] year. It's a historical situation. This is how it's been."

Mrs Tavendale said an added pressure was the council's water infrastructure, including rural schemes, had to be of a certain national standard before it could be passed to the new water entity. "Which seems counter-intuitive."

Otematata Volunteer Fire Brigade chief fire officer Jason Walker said recent work on



Giving us a clear picture in Otematata - continued

water infrastructure in town had resulted in some hydrants being asphalted over or shifted without consultation putting effective fire fighting at risk.

He acknowledged the work put in but, "can it be followed up with quality assurance afterwards?"

Otematata businessman Carl Smith said no business would be allowed to continue to operate beyond their means in the way it appeared the council had.

"We'd be broke if we did that." And it felt as if the needs of small towns in the district were ignored.

"It's like Kurow, Otematata Omarama, who cares?!" he said.

Mrs Tavendale said in recognition of this gap locality officers had been employed whose role it was to work within each of the wards to improve communication between the council, community boards and residents.

Omarama resident Lesley Jackson asked if the proposed rates jump would then become the "new norm" or if it was a once off.

Mrs Tavendale said once the new rate was adopted it would set a new baseline. However, rates would drop next financial year when the three waters were passed on to the new entity. But, it was important for ratepayers to be mindful they would get a separate bill for this.

"Rates might well go down but water charges might go up."

When asked when the council might "break even" Mrs Tavendale said to do that this year would require the council to adopt the 45% rates rise.

"Out of the last 10 years nine years have had deficits. If we are going in at 19% we are certainly not going to break even."

Mr Walker asked how this would affect those on fixed and limited incomes.

Mrs Tavendale said the council recognised that "people are hurting". And it was trying to find ways to help.

The Government offered a rates rebate scheme and she encouraged people to look at that.

Council chief executive Alex Parmley said staff were working on proposals for the council to consider changing the penalties for late payments in a bid to reduce pressure.

Mrs Tavendale said unlike businesses councils had to take the community's wishes and wellbeing into consideration and that was always going to be difficult.

"One person's nice to have is another person's wasteful spending."

Although, she "had not been at the table" when the vote to go ahead with the Oamaru Stadium had taken place she said there were two sides to the argument for that.

Young people were leaving Oamaru for better sporting opportunities elsewhere.

"There was a pocket of the community for whom it was really important."

And sometimes there was a cost to not doing things.

"Hindsight is amazing," she said.

There would be community meetings about the three options and other engagement during the consultation.

Consultation closes at 5pm on Wednesday, May 13, 2026.

There would be no formal hearings following the consultation .

Following up on footpaths

After hearing concerns about the state of Ōmārama's footpaths Waitaki's mayor has agreed the matter needs another look.

Last month, the Omarama Residents' Association took its concerns about the lack of footpath maintenance in the town to the Ahuriri Community Board which held its meeting in the Omarama Hall.

Age Concern Otago-Waitaki coordinator Kathryn Bennett also expressed concerns on behalf of the organisation.

Residents' Association chairperson Stephen Grundy told the board there had been little maintenance work done since the 2017/2018 financial year, yet rates continued to be collected to carry out the work - \$126K in the Board's amenity fund as of June 2025. Additional funds were collected through the general rate and in development contributions.

Residents had regularly raised the subject through submissions to previous long-term plans and through the masterplan process, he said.

Last year Jacqui Eggleton, the CCS Disability Action – Local Advisory Committee Chairperson, made a submission to the 2025 to 2034 long term plan about the need to upgrade Omarama's footpaths to improve accessibility, he said.

He wanted to know what the board's plans were to make sure the monies collected for maintaining and upgrading footpaths were used to remedy or improve this present situation.

Mrs Bennett said it was the council's responsibility to make sure footpaths

- continued over

Example of problems found



broken seal

grass

3 surfaces

low branch

kerb damage

tree roots



Road repair? and no footpath

oversized chip

trip hazard



No crossing ramp, path just ends

potholes - gravel - dirt - weeds

trip hazard

Following up on footpaths - continued

and curbing were safe to use and to make sure urgent safety-related defects were addressed as soon as possible.

“Well-maintained footpaths contribute significantly to convenience and safety for pedestrians. The ability to use footpaths safely—whether on foot, by wheelchair or mobility scooter, or with a stroller—is crucial for many people.”

The impact of a fall on an elderly person could be both significant and ongoing, she said.

“Beyond the immediate injury, ongoing physical, emotional, and psychological issues may arise for the person who has fallen.”

“I expect that the Ahuriri Community Board and the wider Waitaki District Council will listen to the concerns raised here today and pro-actively work towards resolving these issues in a timely manner, so that all residents and visitors can safely, and with dignity, access their community,” Mrs Bennett said.

Ahuriri Community Board chairperson Cal Reid said all five towns in the ward had “issues with pavement management” and it was something the board would be addressing although maybe not in the short term.

Council support services director Paul Hope said there was a need “to revisit” what were “affordable, maintainable standards” for urban areas and what was appropriate for “villages”.

“You are never going to have asphalt footpaths with fully constructed curb and channelling on both sides of the road. We don’t have that in Oamaru”

“How much can a location afford? How much can a community afford?”

And the council needed to be clear about what it was responsible for, what NZ Transport Agency was responsible for and what private businesses might be responsible for, Mr Hope said.

Mr Reid said over the years he had pushed for more to be rated for footpath maintenance. Too little had been rated “...three percent increases and not 10% increases which has meant the funding is just not going to do it.

We’re now playing catch up and ...its going to be hard,” Mr Reid said.

After some discussion Waitaki mayor Mel Tavendale said she acknowledged the importance of the issue and would take the matter back to the council ‘team’ for it to have another look.

The community could expect to hear a reply back through board representatives, Mrs Tavendale said.

“I do agree that it is incredibly important, recognising that we also have issues in a number of places.” There would always have to be some compromises made.

“We will have a look at that and make sure we do come back with a plan on that,” Mrs Tavendale said.

After the meeting the Omarama Gazette sent these follow-up questions to the council as a Local Government Official Information and Meetings Act 1987 request.

“The Financial Report to the Ahuriri Community Board (February 2026) stated there was \$126,718 in The Omarama Township amenity fund at June 2025.

How much was in the fund at March 31, 2026?

If monies have been spent from the fund since June 2025, what specifically have they been spent on?

What is the plan for spending the remaining funds? I.e What work in the Omarama township have these funds been allocated to? What work is planned?

The \$126, 718 of rates is collected and tagged specifically for the Omarama township, who has the delegated authority to spend these funds? Or, have the funds been committed to something other than Omarama Township amenities?

Have they been spent on something else, if so, then what has they been spent on or what have they been allocated to?

NZ Transport Agency published its New Zealand guide to pavement evaluation and treatment design in 2018, the Whanganui District published a Guidelines for Footpath Inspection and Fault Grading Standards in 2023. What is the Waitaki District Council's guideline? Please attach a copy of any WDC standards or guidelines to this request.

Many thanks for your time and consideration."

The council has said it will reply by Monday, May 18, 2026 following the statutory timeframe as prescribed by LGOIMA.

In small communities volunteers wear many hats.

Declaration:

I am married to Stephen Grundy who is Residents' Association of Omarama committee chairperson.

I attend the public meetings of the association as a Waitaki District Council ratepayer, an Omarama Hall ratepayer and the editor of the Omarama Gazette. I speak to issues relevant to each of those roles as necessary.



St Thomas's Care Centre project moves ahead

The Omarama Residents' Association-led project to extend the Omarama Memorial Hall to cater to the growing needs of the community is moving forward.

Last month, the Residents' Association of Omarama Incorporated committee formally acknowledged the project would head its list of priorities for the year ahead.

Long term Omarama resident Ann Patterson was authorised by the committee to lead this project and given the go ahead to form a subcommittee of the association to undertake the work under the terms of its constitution.

The project has the working name of St Thomas's Care Centre in recognition of the link to St Thomas's Church and because the seeding funds for the project come from the proceeds of the sale of the church.

The draft proposal is to build an extension on to the Memorial Hall – in effect becoming Stage II of the original 2011 Omarama Community Centre rebuild project.

This would be a multi-functional, flexible space which could provide room for small, confidential meetings, like counselling sessions, or open out from the hall to provide more space for larger functions, a space for socialising, fun, connection and inclusion for all ages.

Importantly, it would honour the legacy and intent of those who originally donated and built St Thomas's Church using various design aspects and with an area clearly marked as a space for sanctuary and contemplation.

The present day community centre and hall are in constant use and demand for more space is growing.

The project working group will begin with about \$118,000 which was vested in the association by the Presbyterian Synod of Otago and Southland and its Otago Foundation Trust Board, and ringfenced to be used for the purpose for which they were given by a RAOI bylaw.

Omarama residents gave both the land and raised funds to build St Thomas's Church which opened in 1986 and gifted these to the synod. The Trust Board sold the property and building in 2023. The sale price was \$750,000.

The Trust Board placed legal restraints on the use of the funds transferred to the Association.

These were that they would be used for a project 'similar in intent' to the intent of the people who gave the original funds, and would be used for something 'similar enough to a church or the use of a church, something to be used for 'sacred fellowship'.

The original concept for the project was agreed to by the RAOI committee in a unanimous vote at its June 2024 public meeting.

Once the subcommittee has been officially appointed its first steps will be to formalise the overall plan and costs, produce a prospectus and begin fundraising. It is required to report monthly to the full committee.

The project will not be moving ahead without community input. Mrs Patterson would like to ask the community to carefully consider the proposal and to put their thoughts to a monthly meeting of the Residents' association or to public meeting at a date to be advised.

They are also welcome to contact her at merinolodgeomarama@gmail.com or RAOI chairman Stephen Grundy omarama.chairperson@gmail.com

The next meeting of the RAOI is 7pm Thursday, May 21, at the Omarama Community Centre

Background

In 2009, the Residents Association began fundraising to pay for a proposed \$650,000 redevelopment of the old World War 2 Memorial Hall, today's community centre. This was officially opened in October 2013.

That project was kick-started by \$169,000 from the sale of the Omarama Medical Centre which formed seeding finance to raise other money.

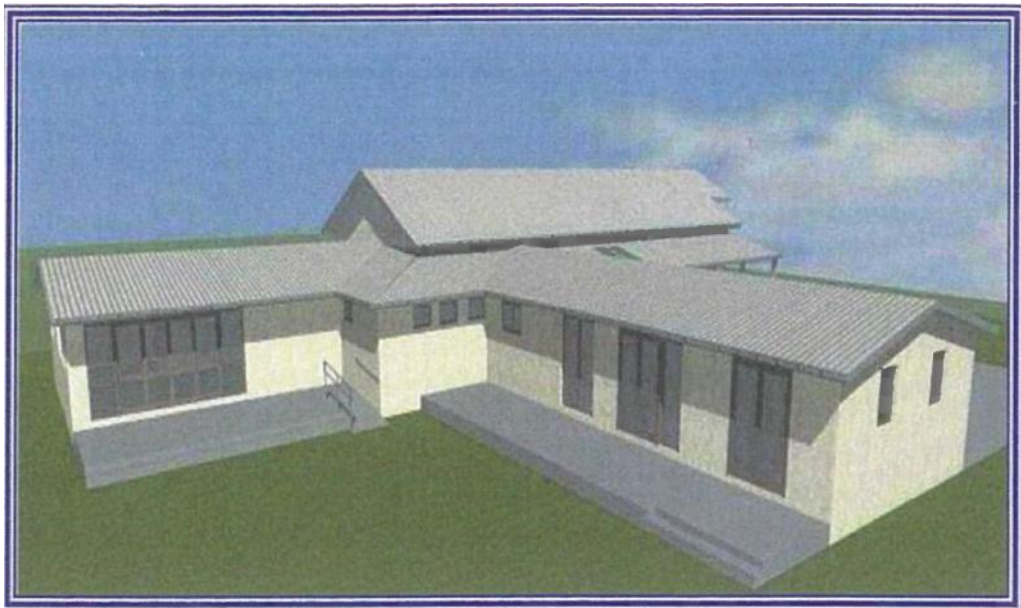
Some of what those earlier volunteers envisaged – a gymnasium and civil defence facilities for example - was not able to be realised at the time.

Ōmārama's original memorial hall, a wooden building, opened October 14, 1925, and was built near the Omarama Hotel, but burnt down in 1957.

It was seen as a big loss to the community. An insurance payment of 12,000 pounds went towards building the present hall where it is now, somewhat east of the old site, and this was completed about 1960.

On each occasion it has been through the hard work of the community that the facilities were built, rebuilt and upgraded.

The significance of that dedication becomes especially apparent when the sacrifices which had to be made to pay for the first the building during the Depression years are considered.



Anzac Day in Ōmārama, 2026

Close to 200 people gathered in sunshine at the freshly landscaped Ōmārama War Memorial this morning to remember those from the district who served and died in war.

Upper Waitaki Returned and Services Association president Indi Gard and Ahuriri Community Board chairman Calum Reid gave the addresses. Mrs Gard spoke of the grief for not only those who died but for those “damaged” and those left behind.

There was an “enormous loss of life” for those who served in World War 1, across New Zealand – almost 3000 New Zealand Soldiers lost their lives at Gallipoli - and this was particularly hard on small townships like Ōmārama, she said.

Anzac Day was a day to recognise and honour the cost of that service and the sacrifice made.

The years had in no way diminished the significance of that service “in the line of duty and the pursuit of peace”.

Those commemorating today could celebrate the “endurance, courage, good humour and friendships of the soldiers... their good spirits, teamwork and bravery.”

And there was a continuing need to “stand up and show the Anzac effort was not in vain,” she said.

Mr Reid told the story of Robert Walter Preston Cameron (Bob) of Wainui Station, near Kurow.

Mr Cameron joined the Royal New Zealand Airforce when he was 22 years of age and served in World War 2 from 1939 to 1945, flying Lancaster bombers and rising to become squadron leader of Bomber Command.

Entry to the Airforce was no small matter with demanding studies in navigation, weather, mathematics and trigonometry required, and only after passing these was he accepted for flying training, Mr Reid said.

Initially, he was taught to fly Tiger Moths by renowned early New Zealand aviator Harry Wigley who once joked that it took some time to convince his pupil he was “flying an aeroplane and not driving a tractor”.

He headed across the Pacific with friend Sandy Wigley arriving in Pearl Harbour a week before it was bombed. Then they headed for Canada where they gained their wings and “were quickly introduced to the realities of war”.

Of the 56 airmen stationed with them only 28 returned home.

Early in 1942 the airmen travelled by train across Canada and eventually by ship to England.

“Along the way Bob would parade up and down the station platforms playing his bagpipes... a small moment in time before the enormity of what lay ahead.”

Over time, his training and service would define his duty in Bomber Command,” Mr Reid said.

In all he served two tours of active duty, flew 31 sorties, completing more than 740 hours of “active, productive flying, the majority by night over Germany.”

“He was regarded as an above average pilot in all areas...some say the Bomber Command kept their best until last.”

The war ended while he was home on leave.

Despite being awarded the Distinguished Flying Cross he never saw his service as exceptional and returned to farming at Wainui, marriage and raising a family, Mr Reid said.

“He spoke of professionalism, preparation and trust in those around him and he

believed in his crews, respected his commanders and accepted the risks because everyone shared them.”

“His commitment to service did not end with the end of the war.

“His leadership in agriculture, local bodies and sports across the Waitaki Valley and in New Zealand was recognised in 1994 when he was awarded the Queen’s Service Medal. Anzac day held particular meaning for Bob. For many years he was piper at Hakataramea, leading parades across the bridges from Haka to Kurow...

“Bob Cameron’s Legacy was not one of loud heroics but one of quiet courage, in war and in peace... a man who served his country and then came home and served his community,” Mr Reid said.

In the spirit of service, school pupils completing the William Pike Challenge took an active role in today’s commemorations. Briar McKerchar, Mazie Paton, Maddie McCabe and Leona Leopold recited the readings. Toni Hales, Emilia Newfield together with Maddi and Mazie helped with other duties before and after the service.



Do we dare to dream?

Do we dare to dream? Is this our field of dreams?

Rugby? athletics? cricket? For us, for our children, for our future?

Let’s kick this idea around a bit at a mid-winter barbeque.

Saturday, June 20

at the Omarama Community Centre picnic area.



A flying visit for a special presentation



About 15 planes and 30 people flew in to Omarama Airfield from all parts of the region today to take part in a special presentation to the Glider Café. It was selected by the Aircraft Owners and Pilots' Association to receive its 2026 Aviation Watering Hole of the Year' award.

Nominations are put forward by AOPA members from around the country and the winner selected by life members. The organisation has about 1200 members.

Owner Jennie Hales said she was honoured and slightly overwhelmed that the Café had been selected to receive the national trophy in only her first season.

She took over the lease in October.

Aopa life members Kevin Anderson, of Mosgiel, and Brian Hore, of Nokomai, made the presentation.

Mr Anderson said although she had only had the cafe for a short time the members felt she had done a "magnificent job".

Mrs Hales said she was grateful to the group for "making it a really great season". "We'll be back next year bigger and better," she said.

Aircraft Owners and Pilots' Association life members Brian Hore, of Nokomai (left) and Kevin Anderson, of Mosgiel, congratulate Glider Café owner Jennie Hales



A message from Julie and the Pink Ribbon crew

It's that month of the year, when we rally together and try to make as much money as we can for research for breast cancer.

We all know beautiful women, who have had, battled and survived, or unfortunately left us behind due to breast cancer

Donations of any kind are greatly appreciated, you can drop them off at Boots and Jandals Hotel anytime during operating hours.

Please provide your name as we love to recognise you and your help for this cause.

To find out more about the cause and to donate <https://fundraise.bcf.org.nz/fundraisers/PInkRiBbonBrunch/pinkribbonbreakfast>

P.S. Our blokes - all blokes are very welcome to attend. We travel through the cancer journey together. Taking bookings now!

A promotional poster for a Pink Ribbon Brunch. The background is a soft pink with floral arrangements of roses and clusters of pink and gold balloons. A central gold ribbon icon is positioned above a gold-bordered text box. The text in the box reads: 'PINK RIBBON BRUNCH THURSDAY MAY 28 AT 11AM BOOTS AND JANDALS HOTEL, OMARAMA'. Below this, the event details are listed in a decorative font: 'Two-course brunch and a free glass of bubbles', 'Raffles, prizes, and games', and '\$30.00 (pay on the day)'. At the bottom, it states 'All proceeds go to Breast Cancer Foundation NZ' with a gold ribbon icon on either side. A gold-bordered box contains the contact information: 'BOOKINGS TO LESLEY 027 780 0174'. Below this box, it says '(Sales limited to 60 tickets)'.

PINK RIBBON BRUNCH

PINK RIBBON BRUNCH
THURSDAY MAY 28 AT 11AM
BOOTS AND JANDALS HOTEL, OMARAMA

Two-course brunch and
a free glass of bubbles

Raffles, prizes, and games

\$30.00 (pay on the day)

All proceeds go to
Breast Cancer Foundation NZ

BOOKINGS TO LESLEY
027 780 0174

(Sales limited to 60 tickets)

The Noticeboard

To have your community notice included here
email: omaramagazette@gmail.com

The New Zealand Sheep Dog Trial Championships will be at Te Aute and hosted by the Hawke's Bay Sheep Dog Trial Association beginning May 25.

The 2026 Network Waitaki Sports Awards are on May 21, in Oamaru. Congratulations to Sadie Mason who has been nominated as junior sports woman of the year for rowing and netball.

Congratulations to Hazel Mason who has been selected for the New Zealand Secondary School's netball team to play against Australia across the Tasman, in July.

Notary Public Services: Notary Public David Stone at Lake Ohau Alpine Village at present. He is available in the area to provide notarial services. As a Notary Public he can certify and witness documents for use overseas only. (Justices of the Peace provide that service for local use ie use in NZ only.

Unlike JP services there is a charge for a Notary Public's services. This depends on how many documents require to be Sealed and the time expended plus travel if required. Current Photo ID of the appearer is required and the originals of documents, copies of which are to be certified must be produced for sighting. Contact details: 0274 909 188 david@stone.org.nz

Kurow Medical Centre Ōmārama Clinic at the Ōmārama Community Centre, is on Tuesdays. Appointments are available 9am to 4.30pm. To make appointments for all clinics, order repeat scripts or make enquiries please contact Kurow Medical Centre 03 436 0760 or Mackenzie Health Clinic 03 976 0503 . www.kurowmedicalcentre.org.nz

The Ōmārama Community Library is open 9.30am to 11am, Wednesdays and Saturdays. Library hours can change. Email: omaramalibrary@gmail.com

Ōmārama MenzShed meets each Saturday at 10am and at other times too. For further information please contact Malcolm Cameron 022 476 2225

St Thomas' Ōmārama Church Community:

Kurow Presbyterian Parish: Rev Eymbert Johannes Schoneveld, Interim Moderator, Kurow Presbyterian Parish, Waiareka-Weston Community Presbyterian Church, 48 Main Street, Weston. Phone: 022 683 5117
email: westonminister@gmail.com

The Ōmārama Golf Club Saturdays cards in 12 noon, tee-off 12.30pm. Club captain: Greg Stuart 027 438 9018, secretary: Arron Chambers 027 203 2340. www.omaramagolfclub.co.nz

The Ahuriri Community Catchment Group meets once a month. For time and place contact facilitator Bridget Pringle, 021 072 2113 or bridget@irricon.co.nz

The Upper Waitaki Young Farmers Club meets at 7.30pm on the first Monday of each month at the Kurow Hotel. All welcome. Join the Facebook group.

Ōmārama Playgroup meets at 9.30am each Wednesday during the primary school term at the Ōmārama Community Centre. For more information phone or email president Olivia Black 027 833 0869, vice-president Jess Townsend and secretary Bridie Brosnahan 027 341 3010 omaramaplaygroup@gmail.com

Bridge Club - The Ōmārama Bridge Club meets on a regular basis and would welcome new members. If you are interested please phone Sylvia Anderson 438 9784 or Ann Patterson 438 9493.

The Ōmārama Model Aircraft Club meets regularly at its flying ground at the Ōmārama airfield. All welcome - Contact Bevan Allan bjallan@xtra.co.nz

FENZ Ōmārama Volunteer Fire Brigade meets at 7pm each Wednesday at the Ōmārama Fire Station and has its meeting on the third Wednesday of the month. If anyone would like more information about the various volunteer roles available within the fire brigade please get in touch. Email omarama@fireandemergency.nz or contact Jack on 020 4045 0909. You can follow us on Facebook (Omarama Volunteer Fire Brigade)

During winter months a gentle exercises and social afternoon group meets at the Otematata District Club at 1.30pm Thursday afternoons during winter. Gold coin donation and a cuppa after the exercises. Contact Shirley - 021 165 6439, or Diane 021 237 9636.

Waitaki Newcomers Network: For more information about this group and to subscribe to regular updates send contact details to E: waitaki@newcomers.co.nz W: www.newcomers.co.nz F: facebook.com/WaitakiNewcomersNetwork/

Plunket Line: 0800 933 922

To read more, enjoy more photos and watch our place 'come to life' check out our Facebook page and website.

www.facebook.com/omaramagazette/
omaramagazette.nz

To receive email alerts between monthly editions of the Omarama Gazette sign up to our 'Local List'. Email omaramagazette@gmail.com

Thank you to all who share your stories and contribute in other ways to the Gazette.
We all really appreciate what you do.

**The June Issue of the Omarama Gazette
is Wednesday, June 3, 2026.**

Please submit copy
by Thursday, May 28, 2026

The Community Reports

Ōmārama Police



Hi all,

With the increase in fuel prices across the country it is inevitable that the more dishonest losers within society will attempt to steal what is now more valuable than gold...Diesel.

A gentle reminder especially to those that have fuel bowsers or store fuel on their rural properties, please make sure that they are under lock and key. If you have fuel bowsers ensure that they are adequately secured with padlocks, chains or both. Installation of CCTV cameras and security lighting are also a good deterrent.

I have had one reported fuel theft so we need to be making it as hard as possible for thieves should they return. *Stay safe, Bean*

Call triple one (111) when you need an emergency response from police, fire or ambulance.

Use Ten Five (105) to report things that don't need urgent Police assistance.

Usual office contact details:

Senior Constable Nayland Smith

Sole charge Constable / Omarama / Po Box 101, Omarama 9448.

Phone: (03) 438 9559 / Ext: 34580 / mailto:nayland.smith@police.govt.nz

Age Concern Ōmārama

Kathryn Bennett is the coordinator for Age Concern Waitaki, based in Oamaru.

Kathryn's contact details are: 03 434 7008, 027 4347 089

NthOtago@ageconcernotago.co.nz

Hours: Mon-Wed 9- 4.30pm / Thurs - Fri 9-12.30pm



Antony Ford CA



- Farm Accounting Expertise
- Business Advice
- Family and Succession Planning

If you would like us to visit you, please call and arrange a time.

e. office@fordsimpson.co.nz

w. www.fordsimpson.co.nz

PHONE 03 687 2080



Brodie Craig CA

Ōmārama Volunteer Fire Brigade



By Omarama Volunteer Fire Brigade firefighter Jason Pryde

April has been a steady month with 14 call outs made up of five motor vehicle crashes, six medicals, two alarm activations and one rescue.

The rescue involved a horse trapped in a trailer and had a happy ending. It did help that we had a couple of horse owners on the crew!

At the beginning of every month, we have what we call a social Sunday which involves equipment checks for the appliances and any other work that is required on station. We opened this month's social Sunday to the public and what a turn out! Not to mention the

generosity of the amazing food that was supplied. A big thank you to the community that assisted with some of the tasks that were carried out on station.

We are excited to announce our next project that includes our association with our local primary school here in Omarama. We will be working with five local students that are involved in the William Pike Challenge which encourages young people to develop personal strengths and care for others in small communities. This programme will take place over three terms and consists of 10 two-hour sessions held at the Omarama fire station. We will keep you posted on progress.

By the time this article has been published the Omarama Fire Brigade will have gained another new fire fighter, we would like to congratulate Alona Shaw for her achievements. As with all ranks service there is a huge commitment to training and we thank Alona for her time over the last 12 months, well done!

As winter is fast approaching and we are now experiencing negative temperatures, please take care on our roads by keeping the speed down. If in doubt on road conditions, please refer to the NZTA web page on traffic and travel information which includes highway conditions.

Take care, stay safe!



Ōmārama Community Garden

We are a group of gardeners who work together to create something for everyone in our community

Anyone is welcome to pop along to the Community Centre and have a potter, and also to pop in any plants they may have ready to go in. Join the Facebook group: <https://www.facebook.com/groups/742877880594146>

And watch this growing space

Contact: Jennie Hales, jenniehollows@hotmail.com

Let's get growing together!

Ōmārama Community Pantry

The Ōmārama Community Pantry is at the entrance to the community gardens and picnic area at the Ōmārama Memorial Hall and Community Centre.

No donations are necessary but if you'd feel more comfortable giving a small koha this will go to our two community gardens, at the community centre and the school.

Take what you need, leave what you can.



Ōmārama MenzShed

The Ōmārama MenzShed has had a busy month completing the landscaping around the War Memorial at the Omarama Hall in time for Anzac Day commemorations. The curbing around the rock and for the traffic island was completed with the help of contractor Kevin Brooks of Waitaki Village.



The Ōmārama MenzShed meets
at 10am each Saturday
and at other times, too.

**For further information contact:
Malcolm Cameron 022 476 2225**

Kurow Medical Centre

8 Wynyard St, Kurow
P: 03 4360760 F: 03 4360780

E: info@kurowmedicalcentre.org.nz
W: www.kurowmedicalcentre.org.nz
www.facebook.com/kurowmedicalcentre

**Providing 24/7 health care and support to
the people of the Upper Waitaki and Mackenzie**

Kurow Medical Centre and its satellite clinics in Twizel (Mackenzie Health Centre Private Clinic) and Omarama (Community Hall)

are proud to offer our registered and casual patients the following services

- * Ultrasound performed by a qualified clinician (great for minor fractures, gall stones, kidney stones, heart and lung problems, foreign bodies, blood clots, detecting early pregnancy and much more!)
- * Minor surgery * Vasectomies
- * Mole checking and removal * Steroid injections * Venesection
- * Aviation, workplace and driving medicals * Botox for Wrinkle reduction
- * Workplace health screening * Counselling
- * Spirometry to diagnose asthma and COPD
- * Hearing and sight tests for adults and children * Ear syringing
- * Liquid nitrogen for warts, verruca's and skin lesions
- * Cardiovascular risk assessment and diabetic checks (funded for eligible patients)
- * Travel advice and vaccination
- * Cervical smears (funded for eligible patients)
- * Seasonal flu shots and shingles vaccine (funded for eligible patients)
- * Childhood immunisation * Before school checks
- * Postnatal and six-week baby health check

And much more!

GP consult fees: Under 14yrs Free; Adult \$50.00

Care Plus – Free to eligible patients only. Community Services Card \$20

We also offer the following services from external Health Care Providers:

- *Podiatry and Ear Health (Kurow only)
- *Physiotherapy, Acupuncture and Massage (Kurow and Twizel)

Opening hours

Omarama: Tuesdays 9am to 4.30pm

Kurow: Monday to Thursday 8.30am to 5pm, Friday 8.30am to 1pm

Twizel: Monday to Friday 8.30am to 5pm, Saturday 9am to 12pm

Please note: We provide 24/7 on call after hours cover by our doctors and PRIME nurses for all our registered and casual patients.

If you require further information or an appointment, please contact us on:

For Kurow 03 436 0760 or for Twizel 03 976 0503

-Dr Tim and Juliet Gardner

Look us up on our website or Facebook page for more information

!!Weekly Winter Housie 2026 !!

Coming Soon..

Wednesday June 3, 2026

!NEW VENUE! @ the Ōmārama Fire Station

*20 Houses *Super House *Afternoon Tea

*Raffles *Supported by Age Concern

(Please bring small denominations or coins)

A warm welcome to all

Wednesdays at 1pm

One day
I'll start
behaving
myself...

Maybe
tomorrow.



Ōmārama Playgroup

Ōmārama Playgroup meets at 9.30am each Wednesday during the primary school term at the Ōmārama Community Centre.

For more information contact:

President Olivia Black 027 833 0869, vice-president Jess Townsend and secretary Bridie Brosnahan 027 341 3010
omaramaplaygroup@gmail.com

CHIROPRACTIC CARE OMARAMA

Chiropractic is more than pain relief... here's why!

Most people think chiropractic is only for sore backs and stiff necks – but there's so much more to it. Many people use chiropractic to keep their bodies functioning and performing at their best, day in and day out.

We often see positive changes in other areas such as: better range of motion, balance, increased quality of sleep, supports immune function, better muscular recovery, better posture. Increase in energy levels and more!

You don't need to be in pain to take care of your spine. Just like servicing your car, a little regular maintenance can make a big difference to how you feel and function.

If you're curious about how chiropractic could support your lifestyle, we're here to help.

Small changes change everything

Get in contact with us or book online to start your journey towards better health

ACC Accredited and registered - no referral required.

Where you'll find us:

Omarama Practice:

Omarama Community Hall
35 Chain Hills Highway,
Omarama, 9412

☎ 03 433 1888

@ info@waitakichiropractic.co.nz

🌐 www.waitakichiropractic.co.nz



WAITAKI
CHIROPRACTIC



Ōmārama School

- contributed copy



Learning and thriving in the place of light
Ki te Whei Ao, Ki te Ao Mārama e!

Omarama School is a vibrant rural school that reflects the unique spirit of high-country living. At the heart of our community, we provide a supportive and inspiring environment where students are encouraged to thrive academically, socially, and personally.

As a small rural school, we value the strong partnerships we share with our families and wider community. These connections help us create meaningful opportunities for students while fostering resilience, belonging, and collaboration.

We are proud of the many initiatives that enrich learning at Omarama School, including:

- Strong transition partnerships with local Playgroup families and our Headstart programme for four-year-olds.
- Senior students give back to the community, through the William Pike Challenge, including partnerships with the local Fire Service and community projects.
- Hands-on experiential learning opportunities that build confidence, social skills, and real-world understanding.
- A rich local curriculum that connects students to the history, culture, and environment of our region.
- Positive school values and wellbeing systems that support respectful relationships and student success.
- Regular opportunities to connect with other rural schools through sport, cultural activities, and academic challenges.
- Sustainability and environmental learning through our growing Garden Club programme.

Omarama School continues to embrace positive educational change through Structured Literacy, Structured Mathematics, and explicit teaching approaches that support strong learning outcomes for all students.

We are proud of the progress our school community continues to make and look forward to sharing this journey with the Education Review Office during our upcoming review.

We warmly welcome prospective families to visit and experience the supportive, connected, and opportunity-rich environment that makes Omarama School so special. We are keen to hear from anyone living between Otematata and Omarama and between Ōhau and Omarama that may be interested to learn about the wider bus route that we now have in operation.

School email: office@omarama.school.nz or principal@omarama.school.nz

Address: 2 Omarama Ave, Omarama School Phone: (03) 438-9815

Ōmārama School contact details:

Phone: 03 438 9815

principal@omarama.school.nz, office@omarama.school.nz

www.omarama.school.nz

Care in the community

Ōmārama Community Care Group

If you are in need of any assistance please do not hesitate to contact Ruth Grundy 021 294 8002 and we can work together on options and put you in contact with those who can help or for whatever will best suit you.



Twizel Community Care Centre

If you need any of the services listed below please contact:

Twizel Community Care Centre

Mount Cook St, Twizel

Phone: 03 435 0687

Email: admin@twizelcare.co.nz

Hours of opening: 9am - 3pm

Days of opening: Monday - Friday

- **A reminder we have a food bank** available with no questions asked
Our contact details are 03 4350687 and email admin@twizelcare.co.nz if you would like to arrange a convenient time to collect a parcel. (Donations of non-perishable or foods that can be frozen always welcome)
- **Twizel-Tekapo Community Car bookings** – this is a community car that picks you up from your house and takes you wherever you need to go such as town here in Twizel or Timaru for an appointment, whatever you need. There is a cost involved depending on destinations. Monday to Friday
- **Work and Income** – assistance with applying for benefits, helping with queries regarding superannuation, and any other financial assistance you may receive. Printing and scanning of documents.
- **Inland Revenue** – queries regarding anything IRD related, access to forms.
- **Immigration** - passport and other Government agencies.
- **Cancer Society Navigator** – support for anyone with any cancer each third Thursday of every month
- **Home Delivered Meals** – We have small roasts for \$10, Regular meals for \$8 and small snack meals for \$4. We can deliver to your home.
- **Printing/scanning services**
- **Arowhenua Whanau services** – Free health clinic on the first Wednesday of each month.
- **Access to a computer**, printing, free WIFI, community notice boards



Hill Billy Hunt & Quiz Night 2026

Hunting competition suitable for the whole family and all ages.

July 10-12

20 year anniversary

Rego Friday 6.30pm -Ph Entries

Accepted

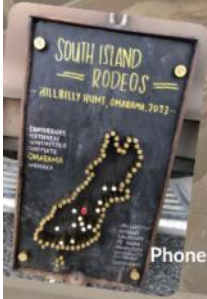
Quiz 7pm

The Wrinkly Rams Omarama

\$50 Teams of 2-4

Weigh in Sunday 3.30pm

exciting spot prizes



Thanks to our Sponsors

Central Otago



Phone entries to 0273470329, with Team Name & members, one person to have Current Gun License

OMARAMA RODEO CLUB

MID WINTER QUIZ NIGHT

TEAMS OF 4 \$50 ENTRY FEE

The Wrinkly Rams Omarama

7pm July 10th



Upper Waitaki Young Farmers Club

From the Upper Waitaki Young Farmers' Club Facebook page...

McSkimming Shearing is with Upper Waitaki Young Farmers Club and Matt Chisholm.

What a night in Kurow

Last month's speed shear and bark up event was something special. A great mix of shearers, farmers and town folk all in one spot — but more than that, it was seeing people connect outside of the woolshed or farm gate that made it. A real cross section of the rural community, mingling, competing, and having a bloody great time together.

Big hats off to the Upper Waitaki Young Farmers Club for rolling up their sleeves and making this one to remember. Cheers to all our staff who helped get the event going with crutching or setting things up. A big thank you must also go to Ross and Trish at the Kurow Hotel for taking the leap and letting us host it at their place — it was the perfect setting.

A massive shoutout to our two charities on the night — Rural Support Trust and Fire and Emergency New Zealand. These organisations do so much for rural communities, often behind the scenes and without enough recognition. Any chance we get to support them is one we'll take.

The Mutt & Mutton Relay brought some serious fun — and left a few people with sore body parts to show for it. Exactly the kind of chaos we were hoping for. Brilliant effort from everyone who threw themselves into it.

To the wider community — thank you for getting in behind it. That kind of support means everything.

A special shoutout to my offsider for the night, Matt Chisholm — love your energy mate and the way you do things. It genuinely helps me along in all areas and I'm stoked to have you in my corner.

Thank you to all of the awesome sponsors and congratulations to everyone who competed — farmers, shearers, dogs and human dogs alike. You were all brilliant. Connecting in a positive environment is only ever a good thing. Here's to more of it
Photos: <https://www.facebook.com/dana.j.imagery>

AGM and Monthly Meeting Coming Up!

Join us on Friday, May 15, at the Kurow Hotel for our AGM,
followed by our monthly meeting—7:30pm start!

Everyone is welcome to come along.

All roles are up for grabs for the 2026/2027 Executive Team,
so it's a great chance to get involved!

Reminder: only paid-up members can be nominated,
run for an exec role, and vote.

If you're keen to learn more about what each role involves,
have a chat with one of our current exec team

See you all there!

Join the Facebook group. <https://www.facebook.com/UpperWaitakiYFC>

Ōmārama Rodeo Club

Ōmārama Rodeo Club
Annual meeting
7pm, May 18, at the Otematata pub.

All welcome, any apologies can be emailed to
Omaramarodeoclub@gmail.com

Ōmārama Collie Dog Club

GO WELL, TEAM!

Best of luck to all the Omarama Collie Dog Trial Club members who have qualified for the South Island sheep Dog Trial Championships at Mararoa in Southland, this week.

Campaigning in the heading dog events are: Ginger Anderson with Ben and Jet; Ed Aubrey with Jim and Scott; Rick Aubrey with Jack, Monty and Trump; Patrick Henwood with Jade; Scott Hunter with Donald and Lucy.

In the huntaway events are: Todd Burke with Mac and Rob ; Patrick Henwood and Thug; Scott Hunter with Barb II, Bill and Hood.



Ōmārama Residents' Association

The May meeting
of the Ōmārama Residents' Association is
7pm, Thursday, May 21, 2026
at the Omarama Community Centre
The minutes of the last meeting are available from the secretary

The Secretary, P O Box 93, Ōmārama 9448.
The association's email address is omarama.committee@gmail.com

ŌMĀRAMA COMMUNITY CENTRE HALL HIRE

To make a booking for an upcoming event
or for more information about
hall hire and availability
please contact Michelle Kitchen 027 280 5446
or email hallhire.omarama@xtra.co.nz



Friends of Ōmārama School

The Friends of Omarama School
Annual Meeting
is 6pm Monday, May 11, 2026
at Boots and Jandals Hotel Omarama.

Ōmārama Golf Club

Saturday Club Day: cards in 12 noon and tee-off at 12.30pm.

If you are interested in joining the club
email Arron Chambers,
secretary@omaramagolfclub.co.nz for details.
Club captain: Greg Stuart phone: 027 438 9018
Secretary: Arron Chambers phone: 027 203 2340
email secretary@omaramagolfclub.co.nz
www.omaramagolfclub.co.nz

Ōmārama Community Library

The Ōmārama Community Library's
opening hours are 9.30am to 11am,
Wednesdays and Saturdays,
at the Ōmārama Community Centre.
omaramalibrary@gmail.com

Knit Night Ōmārama

Knit Night Ōmārama
5.15pm each Tuesday
at the Omarama Community Centre
Gold coin donations towards room hire would be appreciated.

Omarama Storage



- Secure Lockup Storage
- 3.6m h x 3m w entry
- Short & Long term

Don't let the weather deteriorate your caravan, boat or motorhome over winter. Spaces available now.
Contact Bridget – bridgesp@xtra.co.nz
or Ph /txt 021572798

'The Community Reports' is
dedicated to news
from clubs, groups and sports teams.

Contributions are welcome.
omaramagazette@gmail.com



Fossil Creek Bull Auction - Tuesday 9th June 2026, 2pm

80 Powerful R2 Angus Bulls with a rock solid guarantee

www.fossilcreekangus.co.nz

Blair and Jane Smith: (027) 4324154 / (027) 3841424

 @Fossilcreekangus

newhavenfarms@netspeed.net.nz



LJ Hooker Property Management

We don't just manage your property, we maximise your investment.

Get in touch to find out more!

Rachel Sheridan
Business Development
Manager
0274647751
pmrentals@mcre.co.nz


Members of Century Real Estate Ltd (MRENTL) Licensed Real Estate Agents (REA 3008)

Justices of the Peace

JPs are available by appointment to:

- * Witness documents such as applications for citizenship.
- * Certify copies.
- * Take declarations, affidavits and affirmations.

The service is free of charge.

To make your visit quick and easy:

- * Do not sign anything beforehand.
- * Do take photo identification.
- * Remember to take the original as well as the copy to be certified.
- * Check that a New Zealand Justice of the Peace can complete your documentation



Vicky Munro

Otematata

03 438 7855 021 438745



Alona Shaw

Omarama

027 773 4214

Miles Anderson MP for Waitaki

Your local MP welcomes
all enquiries.

waitaki.mp@parliament.govt.nz

Oamaru

127 Thames Street

03 434 7325

Wanaka

Spencer House Mall

12/31 Dunmore St

03 443 4820



Authorised by M Anderson,
Parliament Buildings, Wgtn.





The difference between settling for a good result and celebrating a great one.

LJ Hooker continues to lead the way across the Waitaki and Mackenzie districts. With strong local knowledge and a track record of successful sales, we're proud to deliver great results for our clients, time and time again.

Call 03 435 0170 or scan the QR code to book your free property appraisal today.



 **LJ Hooker**

Mackenzie Country Real Estate Ltd MREINZ Licensed Real Estate Agent (REA 2008)

Team Twizel

Jess, Karan & Libby



Gary is proud to be covering the Waitaki Valley - with **over three decades in the Real Estate industry** in the Waitaki, Central Otago and Mackenzie Country, selling residential, lifestyle & commercial property.

Living in Omarama, Gary is proud to offer New Zealand's **#1 FREE marketing package and fair flat fees.**

With one centralised national office, we keep overheads low and savings where they belong - in your pocket!

Thinking of selling? **Call Gary today.**



Gary Sutherland
Business Partner & Sales Consultant
027 432 6615
gary.sutherland@tallpoppy.co.nz

FOR
ADVERTISING
RATES
AND
GUIDELINES
phone
021 294 8002
or email
omaramagazette@gmail.com

 **Coralie Reid**
" | ONE AGENCY
THE PROPERTY SPECIALISTS



LICENSED AGENT
021 919 089
coralie.reid@oatps.nz



Licensed REAA, 2008

www.coraliereid.nz



For all your hydraulic requirements

Sales, service, design,
hose fittings & spare parts
97 Racecourse Rd, Washdyke.
Phone 03 688 2902
www.scarlett-hydraulics.co.nz

CarpetPlus+

John Bennett
Owner Operator
Mackenzie and Waitaki Districts

13 Chain Hills Highway
Omarama
027 208 7383
john@carpetplus.co.nz
www.carpetplus.co.nz

+ Carpet + Vinyl + Tiles + Laminate + Timber Floors

Michelle Ward

Registered Valuer

B Com (VPM) PG Dip Com (VFM)
ANZIV SPINZ

michelle@mackenzievaluations.co.nz
0274 329 015

Mackenzie Country Valuations



T & J Golder Ltd
Omarama

Travis 021 710305

For all your excavation
needs give us a call!
Landscaping,
Farm work, Building
sites and more.

Garden Diary - “The linnet’s wings”

It's the time of the year when you can be awake for both sunrise and sunset.

Skies are gold and red merging into the gold and red spangle of turning leaves. They glow like firelight.

It's been busy, again. Why do I let that happen?

Some days I'm only in the garden first thing and at the end of the day.

The days have been bright and clear but chill, and a storm is on its way.

Mornings are beginnings, anything is possible, 'a new day, a fresh try, one more start.'

I collect up the windfalls on my morning walk to the office next door, pears and apples to eat and store, nothing beats the flavour and crispy crunch of tree-ripened fruit.

There's frost on the on the rose in the grey.

I call in for brown eggs still warm and sometimes wrapped in a feather. The chooks chirrup and mither away, like old biddies at the coffee machine. So, I stop for a chat.

We agree. The world is going to hell in a handcart, whatever that means.

Above us, in the bare and thorny branches of the robinias, the blackbirds and starlings click, tut, tut and concur.

It's a bruising day, a day of reverses but maybe, hopefully, progress none-the-less? Hard to judge.

On the evening walk back down the path the day and its troubles slide away in the golden twilight, the liminal space, the blue hour betwixt and between.

Our piwakawaka whanau flutter and squeak, catching their insect meals on the wing in the dying light .Tonight, it seems they've invited the whole hapu for kai.

There's a hedgehog not yet in hibernation rustling somewhere in the fallen leaves – the dog will not approve.

There's light at the window, the fire is on. We might have apple crumble tonight.

All is well.

By Ruth Grundy,

I garden a small space under the big sky in Ōmārama

* The Lake Isle of Innisfree, W. B. Yeats

* J. B. Priestley





When circumstances beyond your control lead to a rural business crisis be it financial, climatic or personal the Rural Support Trust is ready to assist. Services are free and confidential.

0800 RURAL HELP (0800 787 254)

The weather that was @ 44°29'30.1"S 169°58'20.3"E

April 2026

Highest temperature: April 2, 26.5C

Lowest temperature: April 23, -3.4C

Most rainfall: April 4, 32.3 mm

Total rainfall for April: 90.2 mm

The Ōmārama Gazette

Ōmārama's news delivered to your inbox
the first Wednesday of each month

To subscribe email:

omaramagazette@gmail.com

Copyright © 2016 -2026 Omarama Gazette, All rights reserved.